

KAUSTAV **ENGINEERING**

Mechanical Equipments Solutions

ABOUT US

M/s KAUSTAV ENGINEERING is a Leading Mechanical engineering Firm specializing in providing a wide range of Engineering services and supply solutions. With a commitment to excellence, innovation, and customer satisfaction, we have established ourselves as a trusted partner in the Engineering industry. Our expertise encompasses various domains within Mechanical engineering, and we leverage cutting-edge technologies to deliver superior results to our clients.

OUR MISSION

Our mission is to provide innovative, cost-effective, and sustainable engineering solutions and supply services through the utilization of advanced technologies, best practices, and a dedicated team of professionals. We aim to contribute to the growth and success of our clients, while promoting environmentally friendly practices in the engineering & others sector.

CORE SERVICES

- **Engineering Design and Consulting**
- **Equipment Supply**
- **Project Management**
- **Maintenance and Repairs**
- **Energy Efficiency and Sustainability**
- **Supply Through-GeM & CPP**

OUR SERVICES

- **Mechanical Equipment's Basic and Detail Engineering**
- **Reverse Engineering**
- **3D Modelling, Simulation & FEA**
- **New Product Development**
- **Standardization of the Products**
- **Layout design**
- **Refurbishment Jobs**
- **Sheet Metals and Switch Gear Panels(CNC Punching, Bending & Nesting)**
- **2D to 3D conversion (Any Format)**
- **Design & 2D drawing Preparation.**
- **Brush Up training NX, SolidEdge, SolidWorks, AutoCad Mechanical, ZW CAD application with Live project Experience**

WHY WE ?

- We do everything in Standards and following all the conventions required in the field of Manufacturing, Engineering, understanding and presentations.
- Qualified and Experienced Professional Team
- Cost Efficiency
- Accuracy and Innovation
- On-Time Delivery
- Fast Delivery: Same-day delivery within city
- Custom Orders: Special product bundling
- Application High End Engineering Tools-NX, SOLID EDGE, SOLID WORKS, AUTOCAD MECHANICAL etc
- **Post sale services**

QUALITY

M/s Kaustav Engineering is an innovative Engineering & Manufacturing company associated with Engineering, Design & Manufacturing of construction Machineries.

Commitment

The organization is committed to work persistently to meet or exceed the customer's requirements. We are also committed for the continual improvement of the system.

Objectives

Our objectives are to maintain the highest level of customer satisfaction through continuous improvement of processes and to continually strive at keeping work related injuries to a minimum. These objectives are achieved through teamwork and as per the standard procedures which provide the framework for the realization of our quality process.

Responsibility

The Management of **M/s Kaustav Engineering** accepts full responsibility for allocating the necessary resources in training, initiatives and technology required to maintain this Quality System.

This Quality Policy shall be posted, understood and implemented at all levels of the organization.

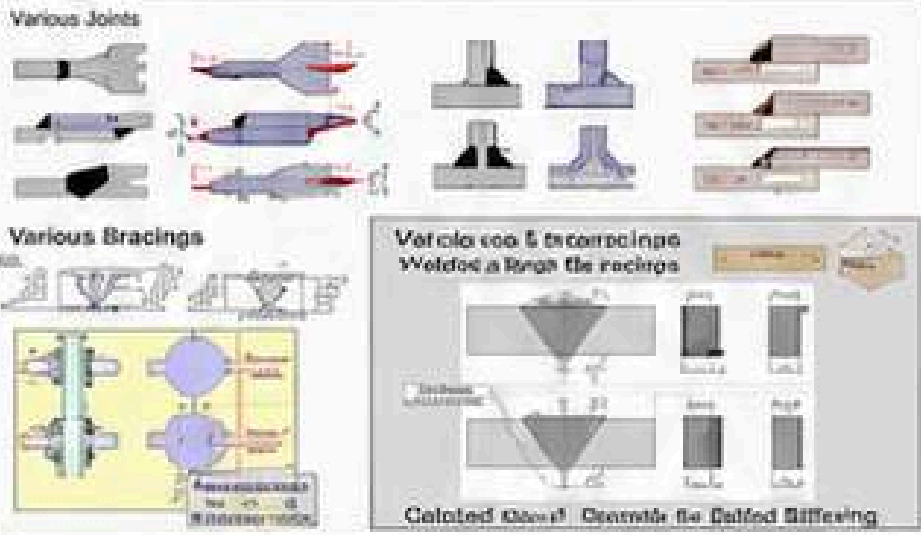


**KAUSTAV
ENGINEERING**
Mechanical Engineering Solution

ENGINEERING SERVICES

ENGINEERING ,3D MODELLING AND DRAWINGS

1 Varied joint and beam in brace - Design British Standard



General Stress Analysis Torsion Equation

$$\frac{G}{F.O.S.} \frac{\partial \theta}{\partial x} = \frac{T}{J} = \frac{T}{A_0} \cdot \frac{1}{r} \cdot \frac{1}{\rho}$$

where, θ = Absolute gross twist in mm/1000 MM
 T = Torque (N-MM)
 J = Polar moie of inertia (mm⁴)
 G = Modulus of rigidity
 A₀ = Enclosed area

Design Basis & codes: Fabric of carbon steel, pipes and tubes

IS 800:2007 General Construction in Steel - Code of Practice	
IS 800:2007 General Construction (Structural member calculations) (Limit state method of design)	Part - 1 & 2
IS 806:2007 Cold Formed Light Gauge Structural Steel Sections - Code of Practice	Part - 6
IS 806:1966 Code of practice for use of cold formed light gauge structural steel in general building construction	Part - 2
IS 1161:2012 Steel tubes for structural purposes (Hollow Section)	Part - 1 & 2
IS 4923:1997 Hollow Steel Sections for Structural Use	Part - 3 & 4

Stress / Strain Analysis Derived stress

According to Hooke's law (For elastic stress analysis)

$$P_{\text{collapse}} = \sqrt{(L_1 - L_2)^2 + \frac{E}{D} (L_1 - L_2)}$$

$$P_{\text{collapse}} = \sqrt{1.2 (D + F + T)}$$

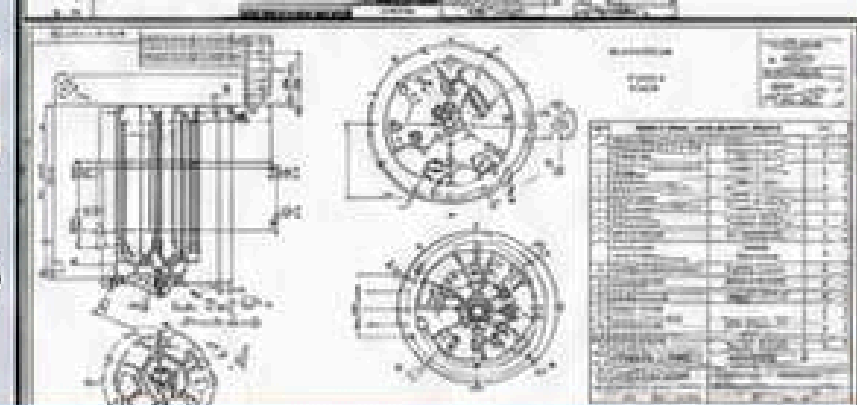
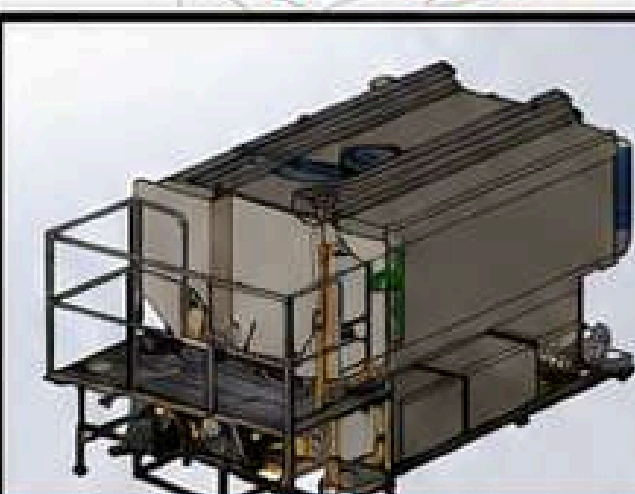
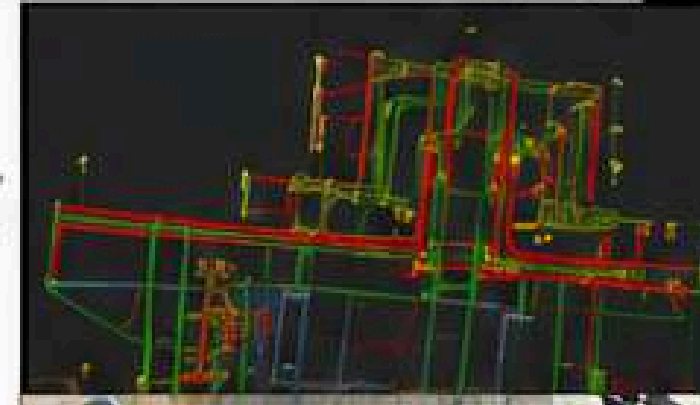
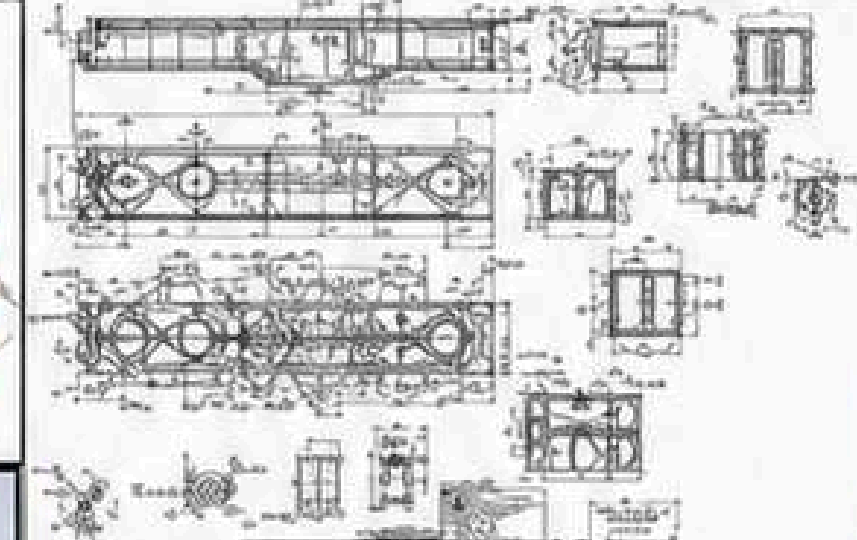
D = Stress (N/mm²)
 E = Modulus (N/mm²)
 L₁ = Initial length (mm)
 L₂ = Final length (mm)

Calculated as per Cl. 8.2 and 8.3 of IS. 800-2007 for limit state of collapse.

Sectional Stress Analysis Stresses in structural plane - acting over X or Y axis.

$$\sigma = \frac{M \times Y}{I}$$

Where, σ = Bending stress at a distance "Y" from the neutral axis of Beam (N/mm²)
 M = Bending moment at the section (Nmm)
 I = Moment of inertia of the section (mm⁴)



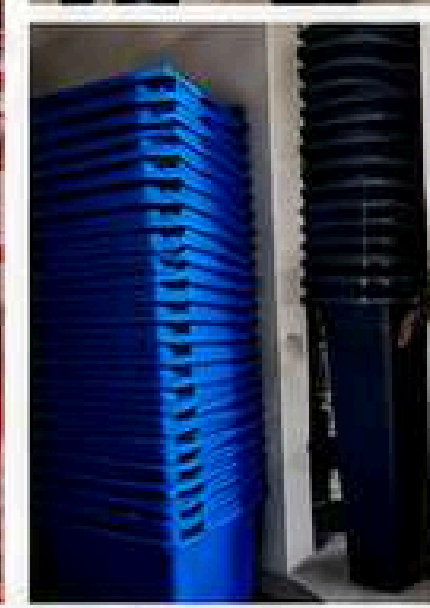
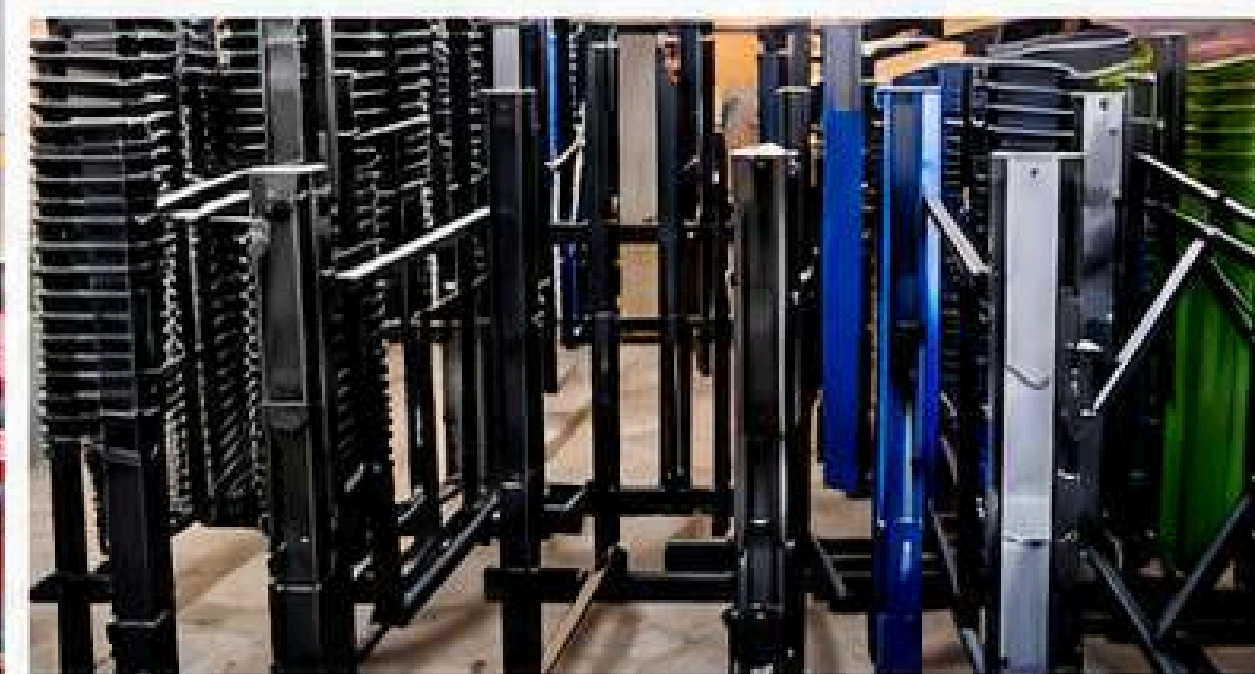
ENGINEERING PRODUCTS



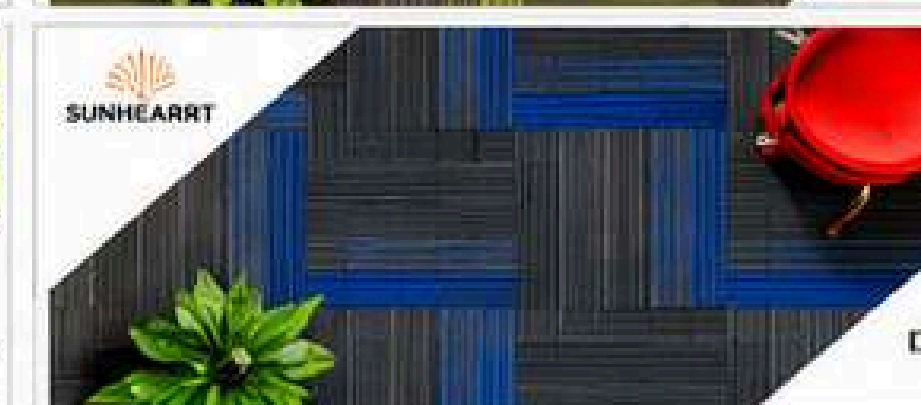
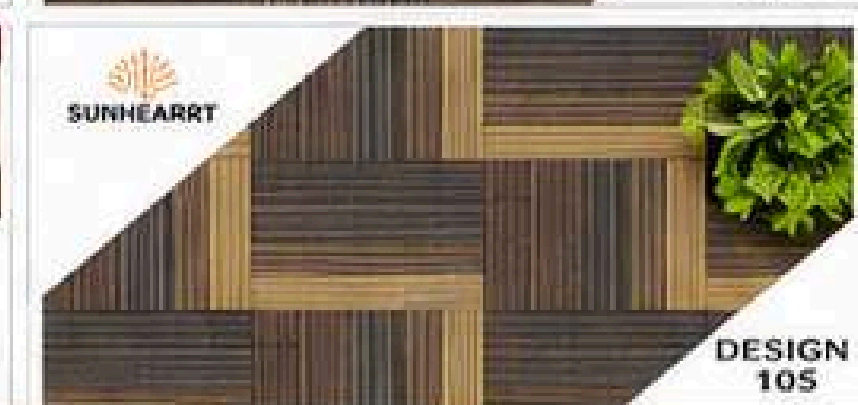
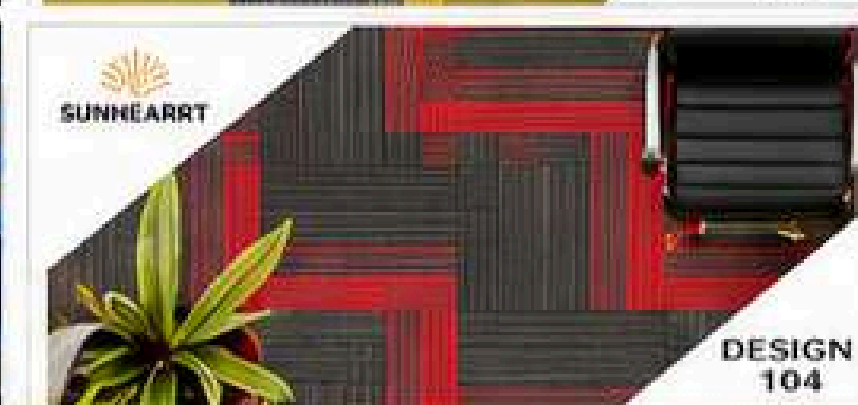
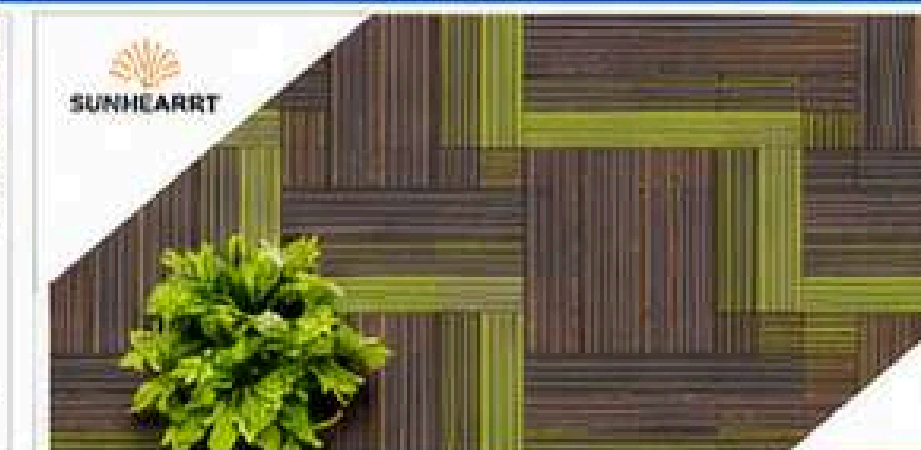
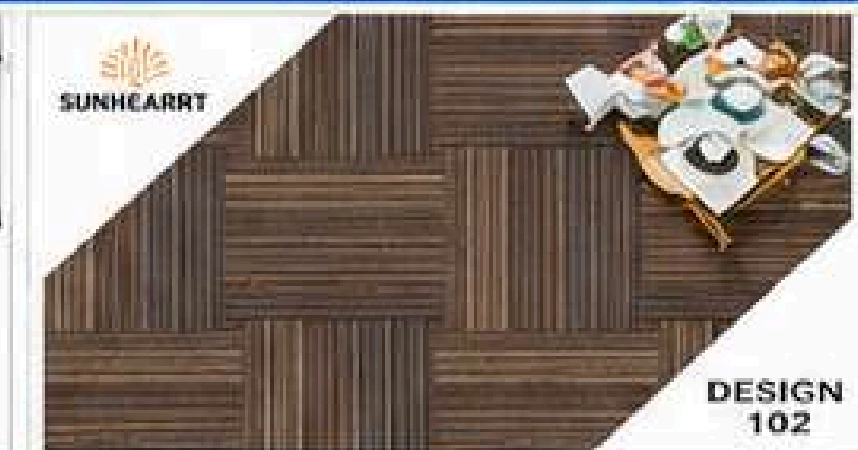
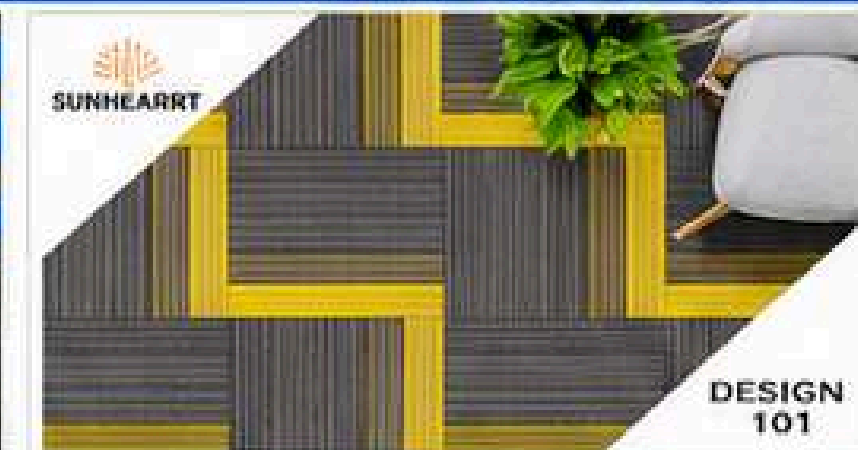
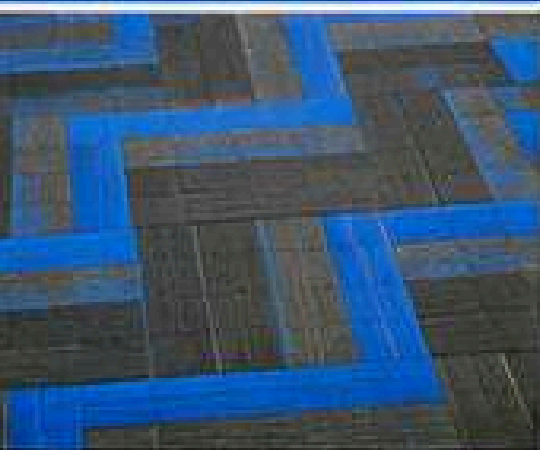
FIRE & WASTE MANAGEMENT

FIRE FIGHTING SOLUTIONS

WASTE DUSTBIN



FLOOR TILES SOLUTIONS



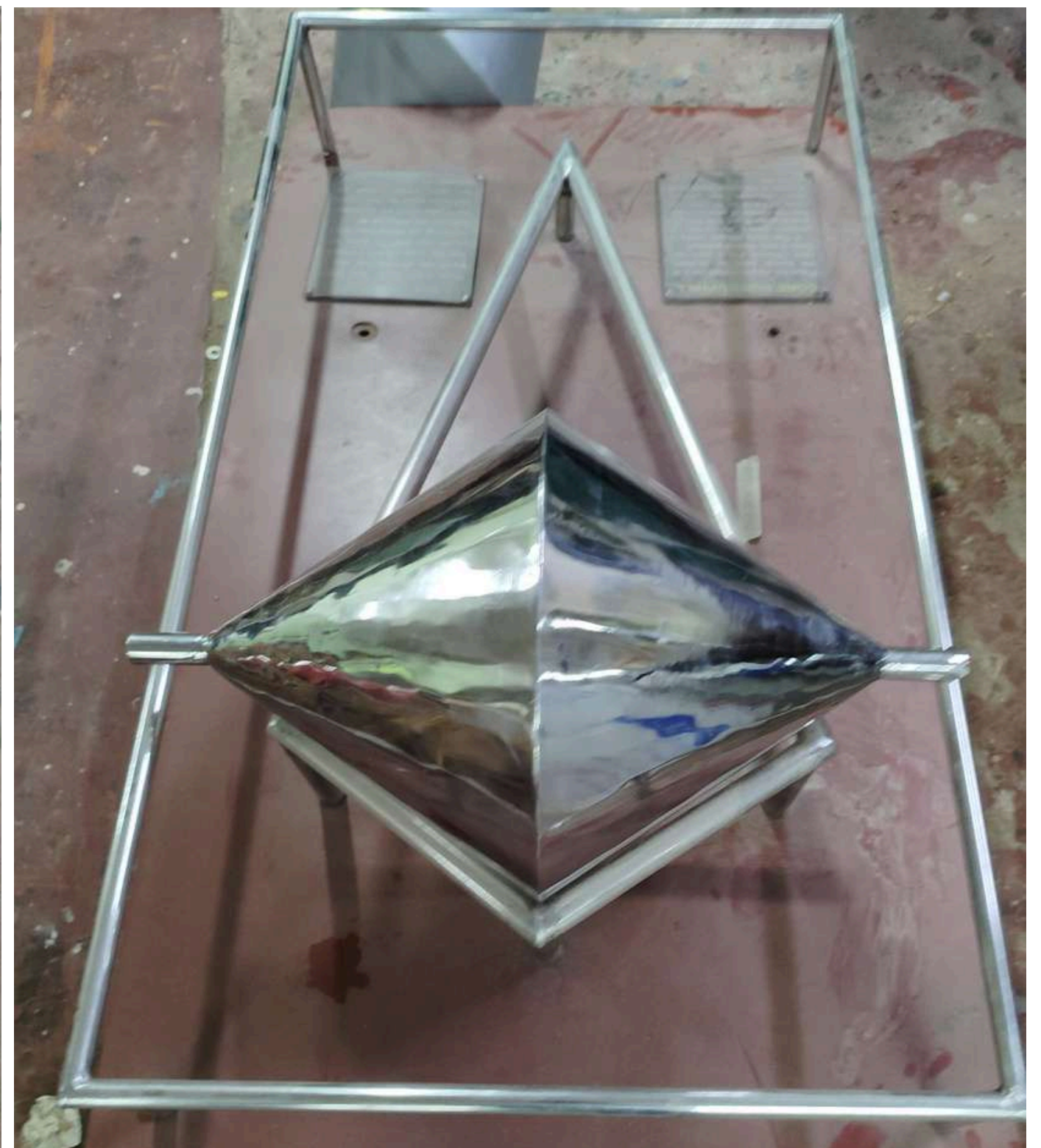
ENGINEERING, DESIGN, MODELLING, DRAWINGS & MANUFACTURING SERVICES

BILL OF MATERIALS

ITEM NO.	DESCRIPTION	MATERIALS/STANDARD	QTY.	REMARKS
1	Pipe with Flange	STAINLESS STEEL	1	For Ref. (Not in scope)
2	Horizontal support plate	MS/Al/SS 2062	4	
3	Vertical support plate	MS/Al/SS 2062	4	
4	STD. nut & bolt	Cr. 4.6	4	
5	Clamp	MS/Al/SS 2062	4	
6	NUT W/LS	Cr. 4.6	24	
7	Washer 100	Cr. 4.6	8	
8	Main Washer	Al/SS	12	
9	Spring washer	SW-1.6	12	

Notes:
 1. PAINTED WITH CORROSION RESISTANT "DOUBLE COATING" PAINT THICKNESS 150 MICRONS TO BE MINIMUM TO RESIST ITS HEAT TREATMENT. SURFACE PREPARATION AND TREATMENT TO BE IN ACCORDANCE WITH PAINT SPEC. 2. ALL EDGES, CORNERS AND HOLES TO HAVE BURRS REMOVED. ALL WELDS AND CUTS TO HAVE SLAG AND LOOSE MATERIAL REMOVED.

Dimension (Not as indicated in the drawing but to be determined by measurement and marking)



SERVICE AND SUPPLY

FURNITURES & PUBLIC SEATINGS



SOLAR, LAB FURNITURE, MEDICAL OT BEDS, MONITORS & FURNITURE



SERVICE AND SUPPLY

KAUSTAV **ENGINEERING** STORAGE SYSTEMS

MEZZANINE FLOORS



Catwalk Storage System



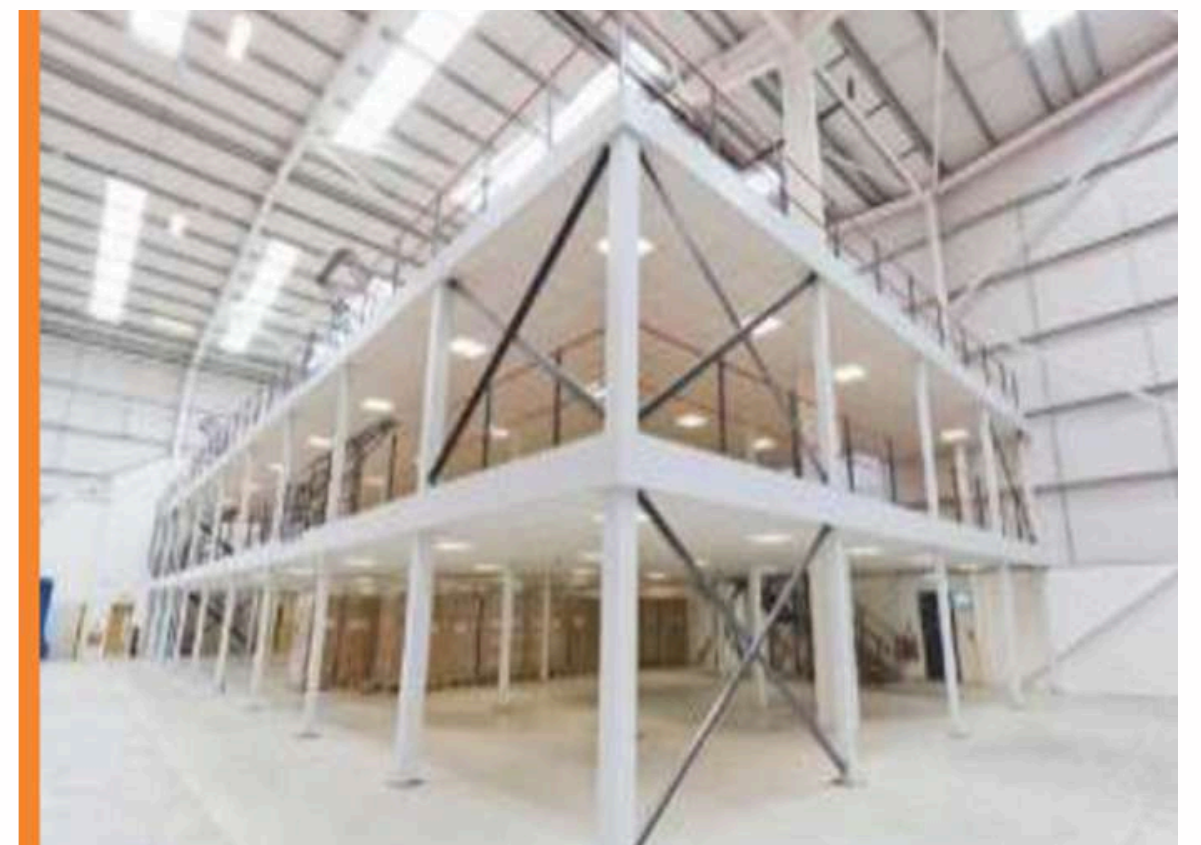
Slotted Angle Mezzanine Floor



SLOTTED ANGLE RACK



SLOTTED ANGLE RACK



Wire Mesh Trolley



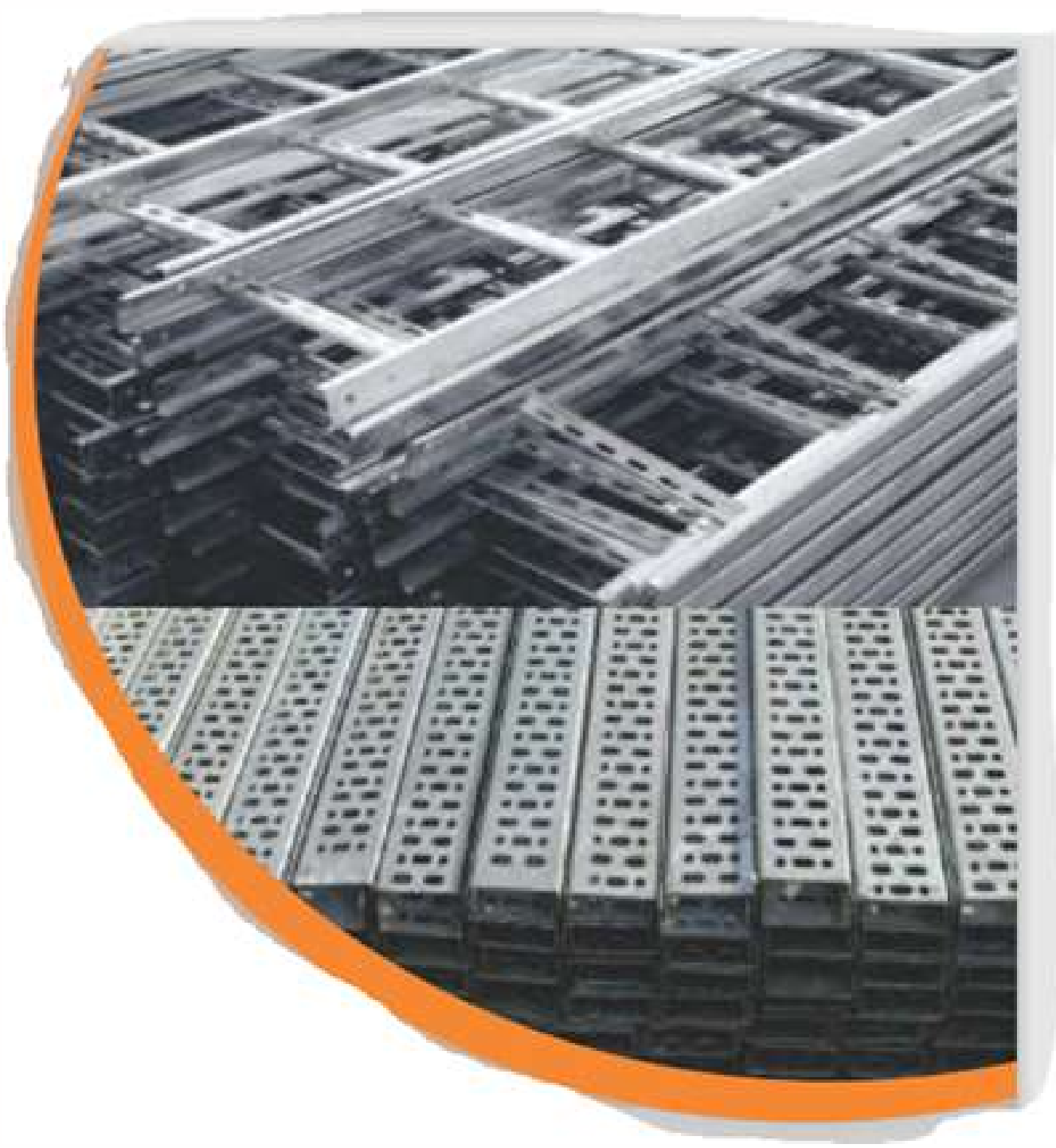
Goods Trolley



SERVICE AND SUPPLY

KAUSTAV **ENGINEERING** STORAGE SYSTEMS

CABLE TRAY



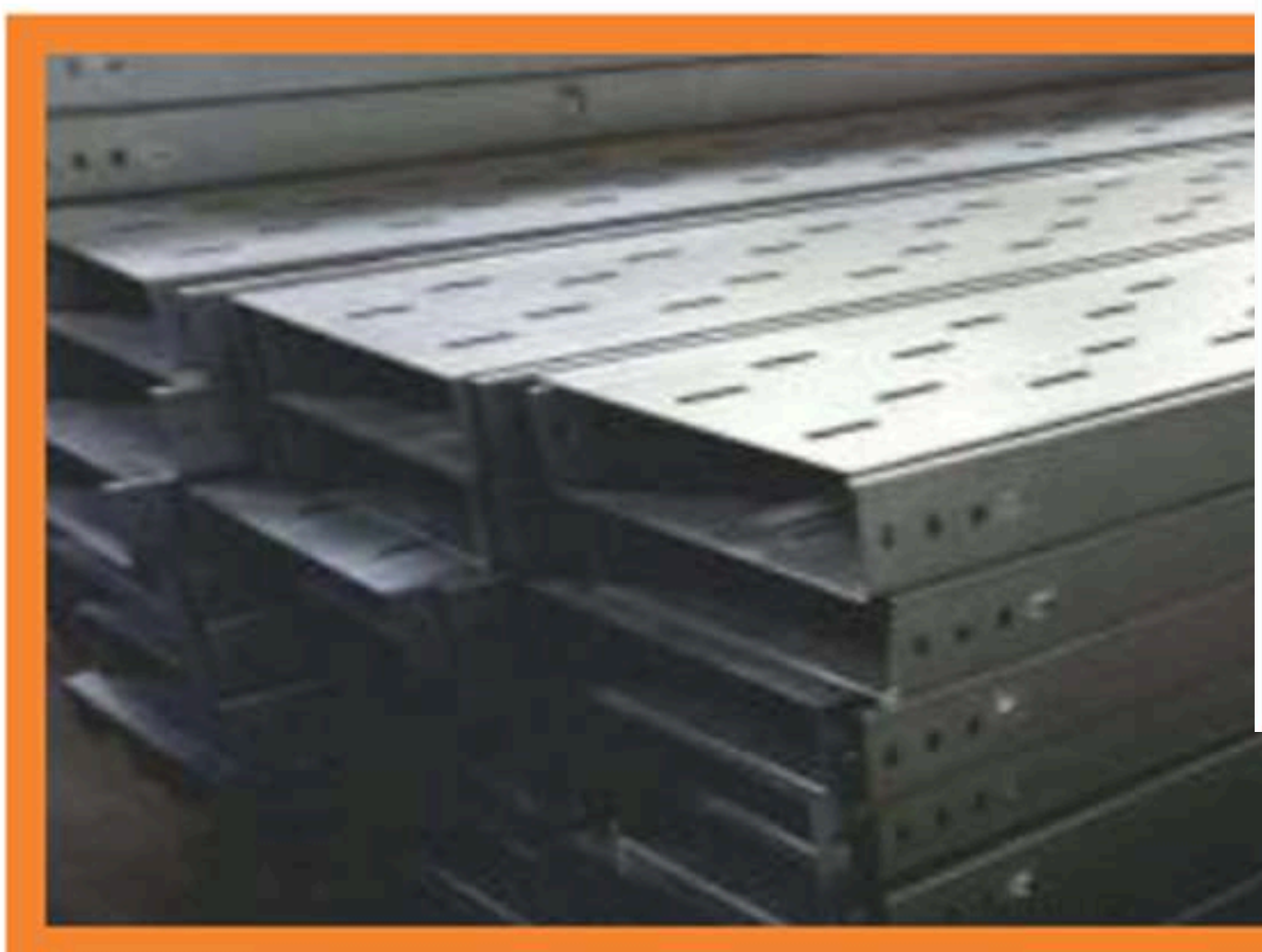
Movable Rack



Two-Tier Rack



Bend Tee Reducer



SERVICE AND SUPPLY

KAUSTAV ENGINEERING STORAGE SYSTEMS

MULTI TIER RACK



Cantilever Type Rack



PALLETS RACK



PALLETS PLATE



MOBILE RACK



Hand Pallet Truck



Plastic Drawer



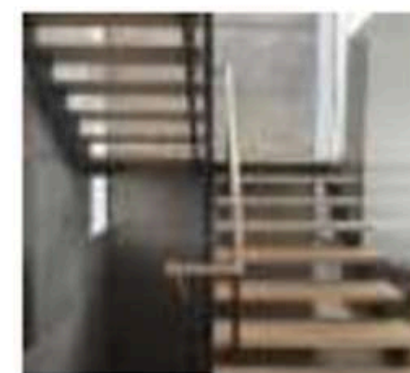
Plastic Bins



Bins



Plastic Crate



Dogleg Stair



Bookshelf

SERVICE AND SUPPLY

KAUSTAV **ENGINEERING**

SCHOOL/COLLEGE FURNITURES



SERVICE AND SUPPLY

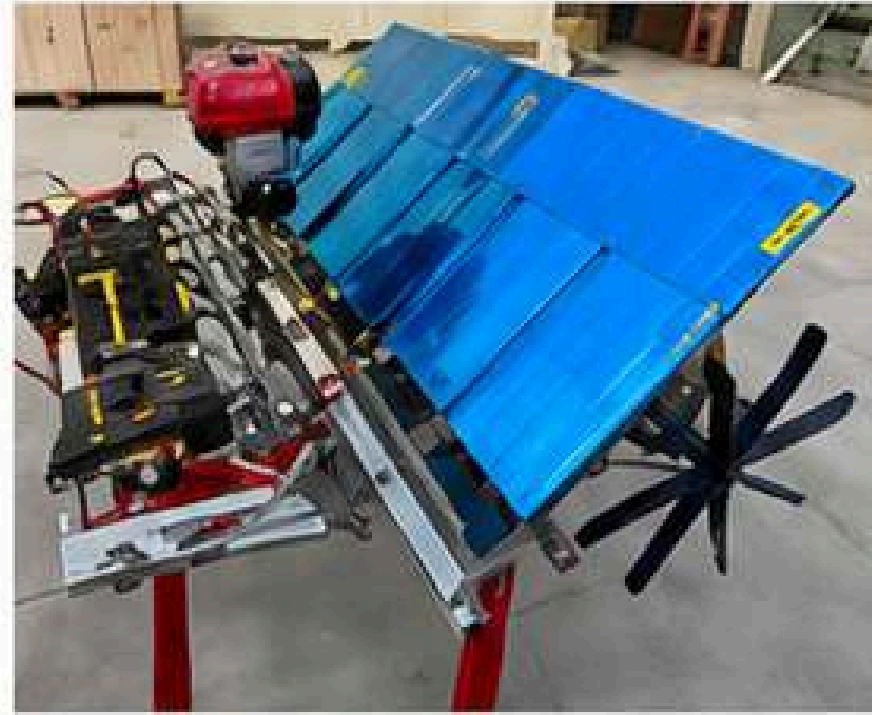
AGRICULTURAL MACHINES



**AGRICULTURE POWER
WEEDER**



PADDY PLANTER



PADDY TRANSPLANTER



POWER TILLER



ROTAVATOR (REAR ENGINE)



CULTIVATOR



WATER PUMP



DELIVERY PIPE



CHAFF CUTTER



**RICE THRESHER
MACHINE**



**AGRICULTURAL
IMPLEMENTS**



**WINNOWING
THRESHING MACHINE**



SPRAYER MACHINE



TRACTOR

SERVICE AND SUPPLY

RESEARCH & SCIENTIFIC INSTRUMENTS



HORIZONTAL AUTOCLAVE



VERTICAL AUTOCLAVE



**LABORATORY BOD
INCUBATOR**



**PLANT GROWTH
CHAMBER**



ROTARY EVAPORATOR



HOT AIR OVEN MODEL



DEEP FREEZER



BIOSAFETY CABINET



PH METER



**LABORATORY BOD
INCUBATOR**



TEST TUBE ROTATOR



**WATER TESTING
METER**

Environment Monitoring Automation Solutions

1. COMPACT WEATHER STATION



2. LIVE REMOTE TEMPERATURE , HUMIDITY MONITORING AND ALERT SYSTEM



3. WEATHER INFORMATION OUTDOOR DISPLAY



4. TEMPERATURE & HUMIDITY SENSOR



5. SOIL MOISTURE SENSOR



6. AIR QUALITY MONITOR (INDOOR)



7. WATER QUALITY METER



8. DIGITAL WATER LEVEL RECORDER



9. WIND SPEED & DIRECTION



10. PYRANOMETER



ACTIVITIES

ALL GEARED MILLING & DRILLING

METAL SHELVES RACK



ACTIVITIES

ACTIVITIES & TRAINING



STATIONARIES, ELECTRICALS & HOUSE KEEPING

STATIONARIES	
1	Marker (All Size , Color)
2	White board & Duster
3	Shingle File (All Size , Color)
4	Spring File (All Size , Color)
5	Lever Arch File (All Size , Color)
6	Clip Board (All Size , Color)
7	Spiral Note Book (All Size)
8	Executive Note Book (All Size)
9	Notepad / Sticky Notes
10	Paper (A4, Color Paper etc.) (All Size)
11	Photocopy Paper (A3, A4, A5 etc.)
12	Calculator (All Size)
13	Pen (Ball, Gel, Roller)
14	Pencil & Lead
15	Highlighter (All Size , Color)
16	Scale (Plastic , Steel) (All Size)
17	Stapler (All Size) & Pin / Clip
18	Staple Remover (All Size)
19	Paper Punch Machine (All Size)
20	Glue (Stick, Fevicol, Liquid)
21	Scissor (All Size)
22	Cutter (All Size)
23	Sellotape (All Size) & Dispenser
24	Double Side Tape
25	Envelop (All Size)
26	ID Card Holder with Strap & Card
27	Writing / Exam Pad (All Size)
28	File Separator (All Size , Color)
29	Folder (All Size , Color)
30	Rubber Band (All Size) & Clips
31	Correction Pen / Fluid
32	Laminating Pouch (All Size)
33	Laminating Machine (All Size)
34	Name Plate (All Size)
35	Paper Bag (All Size)
36	Punch (All Size)
37	Date / Number Stamp (All Size)
38	Paper Tray (All Size & Color)
39	Desk Organizer (All Size)
40	Pen Stand (All Size)
41	File Rack (All Size)
42	Tag (All Size & Color)
43	Thread / Sutil
44	Board Pin (All Size & Color)
45	Chart Paper (All Size)
46	White Board Marker (All Color)
47	Sketch Pen (All Size & Color)
48	Crayon / Oil Pastel (All Size & Color)
49	Paper Clip (All Size)
50	Bulldog Clip (All Size & Color)
51	Binding Machine
52	Spiral Binding Machine
53	Ink Pad
54	Cartridge (All Printer)
55	Toner (All Printer)
56	Ink (All Printer)
57	Adhesive Notes / Flags
58	Cash Memo / Bill Book
60	
61	
62	
63	
64	
65	
66	
67	
68	
69	
70	



ELECTRICALS	
1	PVC INSULATED WIRE (All Size)
2	CABLE (All Size)
3	CABLE TIE (All Size)
4	LUTRON (All Size) , MCB , ELCB
5	CONTACTOR (All Size)
6	ON-OFF SWITCH (All Size) (Modular)
7	SELECTOR SWITCH (All Size)
8	PUSH BUTTON (All Size)
9	RELAY (All Size)
10	OVERLOAD RELAY (All Size)
11	TIMER (All Size)
12	AMMETER (All Size) , VOLTMETER
14	SIGNAL LAMP (All Size)
14	BUZZER / HORN (All Size)
15	CAPACITOR (All Size)
16	CABLE GLAND (All Size)
17	LUG (All Size)
18	TERMINAL BLOCK (All Size)
19	FUSE (All Size)
20	CIRCUIT BREAKER (All Size)
21	POWER SUPPLY (All Size)
22	SMPS (All Size)
23	SENSOR (All Type & All Size)
24	MCB / DB / PANEL BOARD (All Size)
25	INDUSTRIAL PLUG & SOCKET (All Size)
26	FLEXIBLE CONDUIT PIPE (All Size)
27	HEAT SHRINK TUBE (All Size)
28	BATTERY (All Size)
29	TOOLS
30	OTHER ACCESSORIES



HOUSE KEEPING	
1	Broom (All Size)
2	Brush (All Size)
3	Wiper (All Size & Color)
4	Dustbin (All Size)
5	Dust Pan
6	Toilet Cleaner / Phenyl (All)
7	Hand Wash (All Size)
8	Hand Glove (All Size)
9	Tissue Paper / Napkin
10	Toilet Paper
11	Paper Napkin (All Size)
12	Glass Cleaner (All Size)
13	Floor Cleaner (All Size)
14	Surface Disinfectant
15	Scrub Pad
16	Microfiber Cloth
17	Sponge (All Size)
18	Mop (All Size)
19	Mop Stick (All Size)
20	Spray Bottle
21	Garbage Bag
22	Air Freshener
23	Match Box / Lighter
24	Buckets (All Size)
25	Tissue Roll (All Size)
26	Plastic Container (All Size)
27	Water Bottle
28	Tea / Coffee
29	Disposable Cup / Plate
30	Others

PRODUCTS AND SUPPLY

MECHANICAL COMPONENTS

S.O.	MECHANICAL ITEM	BUILDING ITEM
1.	BEARING (ALL TYPE)	CP FITTING
2.	PULLEY (ALL TYPE)	GI PIPE
4.	CHAIN SPROCKET (ALL TYPE)	GATE VALVE
4.	COUPLING (ALL TYPE)	S.S. PIPE
5.	ROD END, TEE JOINT	ANGLE
6.	EYE BOLT, HOOK BOLT	CHANNEL
7.	NUT, BOLT (ALL TYPE)	C-SECTION
8.	STUD (ALL TYPE)	FLAT
9.	OIL SEAL, CIRCLIP	SHEET
10.	KEY (ALL TYPE)	GI WIRE
11.	PRECISION LOCK NUT	NAIL
12.	TAPER LOCK BUSH (PULLEY)	SAND
13.	FENNER TAPER LOCK BUSH	CEMENT
14.	TIMING PULLEY & BUSH	PAINT
15.	MOTOR PULLEY, GEAR & GEAR BOX (ALL TYPE)	COLOR
16.	UCP, UCF,	
17.	UCFL, UCT	
18.	SUCF, SBPFL	
19.	HCP	
20.	NUP, N, NJ	
21.	NU, NCF	
22.	222, 223	
23.	230, 231	
24.	232, 233	
25.	320, 322	
26.	303, 304	
27.	313, 314	
28.	322, 323	
29.	330, 331	
30.	332, 333	

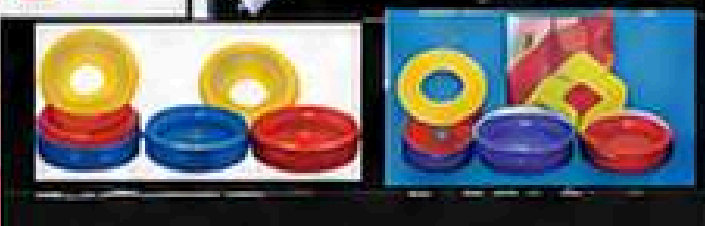
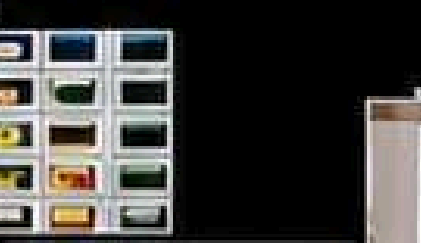


MECHANICAL ITEM
V BELT (ALL TYPE)
V BELT PULLEY
V BELT CLUTCH
RUBBER SHEET
RUBBER ROD
INDUSTRIAL CONSUMABLE ITEM
CUTTING WHEEL
GRINDING WHEEL
WELDING ROD
WELDING WIRE
PAINT & THINNER
INDUSTRIAL & ELECTRICAL ITEM
ELECTRIC MOTOR (ALL TYPE)
LED LIGHT
WIRE & CABLE
PUSH BUTTON & INDICATOR
MCB, MCCB, ACB, CONTACTOR, RELAY, OLR
DIGITAL METER
PANEL BOARD & APFC PANEL
WORK SHOP EQUIPMENT
DRILL MACHINE
GRINDING MACHINE
CUTTING MACHINE & ACCESSORIES
POWER TOOLS & ACCESSORIES
AIR COMPRESSOR

HOUSE HOLD ITEM
PLASTIC BASKET
DUST PAN, MUG
PLASTIC BUCKET
PLASTIC PIPE
WATER TANK
SAFETY ITEM
SAFETY BELT
SAFETY SHOES
SAFETY HELMET
SAFETY HAND GLOVES
SAFETY GOGGLES
EAR PLUG, EAR MUFF
SAFETY JACKET
FIRE EXTINGUISHER



SPECIAL COMPONENTS



PRODUCTS AND SUPPLY

MECHANICAL COMPONENTS

FACE RECOGNITION IN AADHAAR ENABLE

SUPPORT ALL READERS

- MANTRA
- IRI TECH
- FM 220U
- MANTRA
- MORPHO
- PRECISION

GeM
Government e Marketplace



Available on GEM

FACE RECOGNITION

6GB RAM
128GB Storage

8.5 Inch
SCREEN SIZE


4 Hours
Battery Backup

C Type | TCP/IP | DC Charging | Wi-Fi | Bluetooth | 4G/5G | USB Link | GPS

REALTIME TD1D (FP) FACE & PALM RECOGNITION

Palm Recognition 1000

Face Recognition 2000



FASTEST RECOGNITION

EXCEL REPORT DOWNLOAD

Card Capacity 2000

PIN Capacity 2000

Face Recognition
Palm Recognition
RFID Card
PIN Password
Access Control

www.realtimebiometrics.com

Face with Fingerprint Aadhaar Biometrics

Model : T503F-L1

Face Recognition

Finger Recognition



C Type

TCP/IP

Bluetooth

4G/5G

DC Charging

WiFi

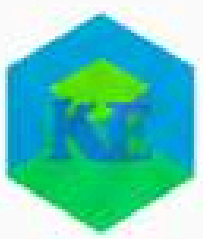
USB Link

GPS

STQC Certification

Safety Net Pass

Face With Fingerprint Aadhaar Biometrics Attendance System



RECENTLY COMPLETED ASSIGNMENTS



**Creality 3D XL
High Speed 3**



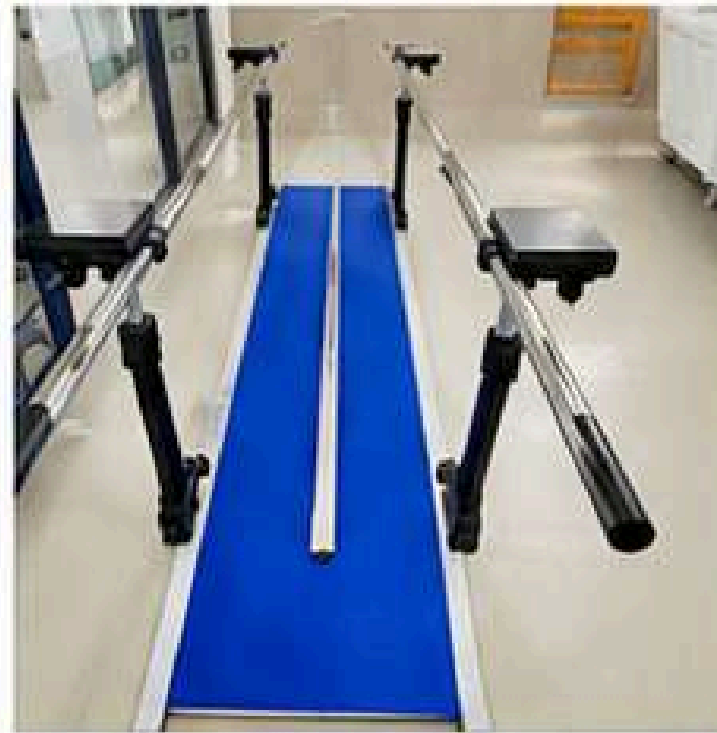
**Cryogenic Liquid Nitrogen
Container**



**RPE 20KVA ONLINE
UPS**



**MOTORISED TILT TABLE
(HEIGHT ADJUSTABLE)**



**PARALLEL WALKING
BAR**



SURGICAL SCRUB BIN



**36-LTRS HORIZONTAL
CYLINDRICAL AUTOCLAVE**



AT FABRICATION WORKSHOP

CLIENTELE



INDIAN EXPLOSIVE LIMITED, JHARKHAND



ICAR-CIFRI, KOLKATA



JBFS, KOLKATA



GREENVIROMENTAL GLOBAL, KOLKATA



ASSAM AGRICULTURE UNIVERSITY,
JORHAT



MECON LIMITED, RANCHI,
JHARKHAND



KAZIRANGAN UNIVERSITY, JORHAT



INSTITUTE OF ADVANCED STUDIES OF SCIENCE AND
TECHNOLOGY (IASST,GUWAHATI)



INDIA METROLOGICAL DEPARTMENT



ALL INDIA INSTITUTE OF MEDICAL
SCIENCE ,GUWAHATI



TEZPUR UNIVERSITY, TEZPUR



TEA BOARD OF INDIA, GUWAHATI



IIT, GUWAHATI, ASSAM



JORHAT ENGINEERING COLLEGE, JORHAT



NUMALIGARH REFINEARY LIMITED, GUWAHATI



NATIONAL INSTITUTE OF
TECHNOLOGY, MEGHALAYA



SPORTS AUTHORITY OF INDIA



BRAHMAPUTRA CRACKER AND
POLYMER LIMITED



GAUHATI UNIVERSITY



AIRPORTS AUTHORITY OF INDIA



INSTITUTE FOR PLASMA RESEARCH



NORTH EAST DISTILLERIES
PRIVATE LIMITED



CENTRAL MUGA ERII RESEARCH RESEARCH
AND TRAINING INSTITUTE



KRISHNA KANTA HANDIQUI STATE OPEN
UNIVERSITY



ASCEND TELECOM INFRASTRUCTURE
PRIVATE LIMITED



ASSAM SCIENCE AND TECHNOLOGY
UNIVERSITY ...

CONTACT US:

Regd address : 704/1, Anjana Apartment
2nd Floor Jogendra Gardens Road,
Kasba, Kolkata 700078
West Bengal, India
Mobile :9831072858 / 9836353450

Branch Office: M/S Kaustav Engineering
H.No-3, 2nd Floor, Sanskrit College Road,
Near Raddision Blu Hotel, Gota Nagar, Jalukbari
Guwahati, Kamrup ,Assam-781014

Mailto: info@kaustavengineering.com
kaustavmachine20@gmail.com
www.kaustavengineering.com

GSTN: 19BKHPS3316P1ZH
MSME: UDYAM-WB-0004985
ISO 9001:2015: US-ENGR-26-36936939

Certified by :



OUR SISTER CONCERNS ARE:
TIMSI PHARMA INDIA PVT LTD.
KRB FORTUNE TRADE